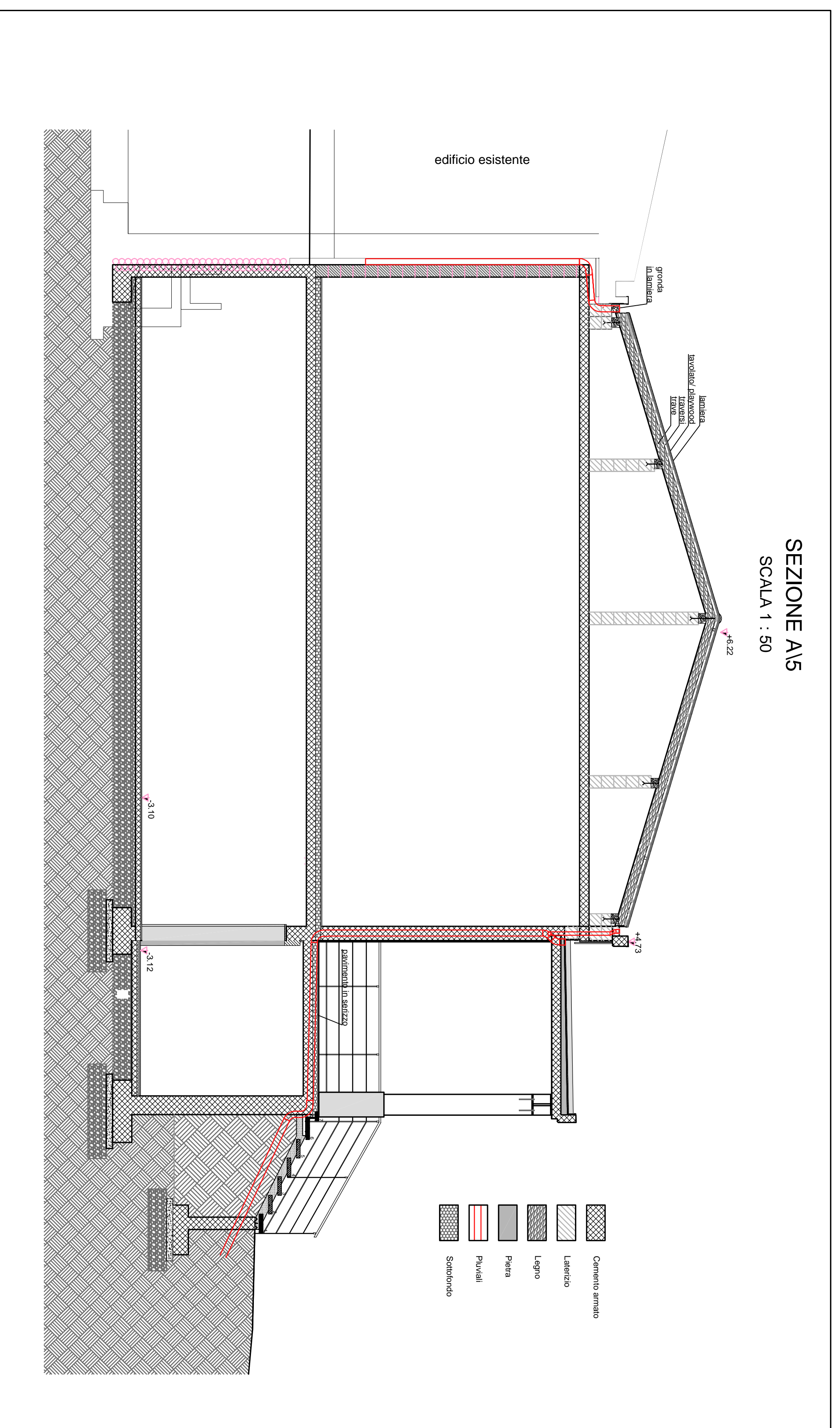
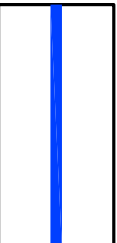
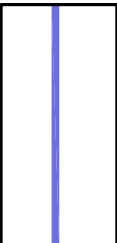
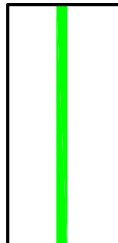
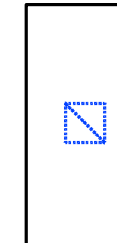
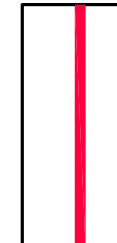



SEZIONE A/5  
SCALA 1 : 50



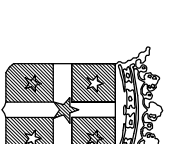
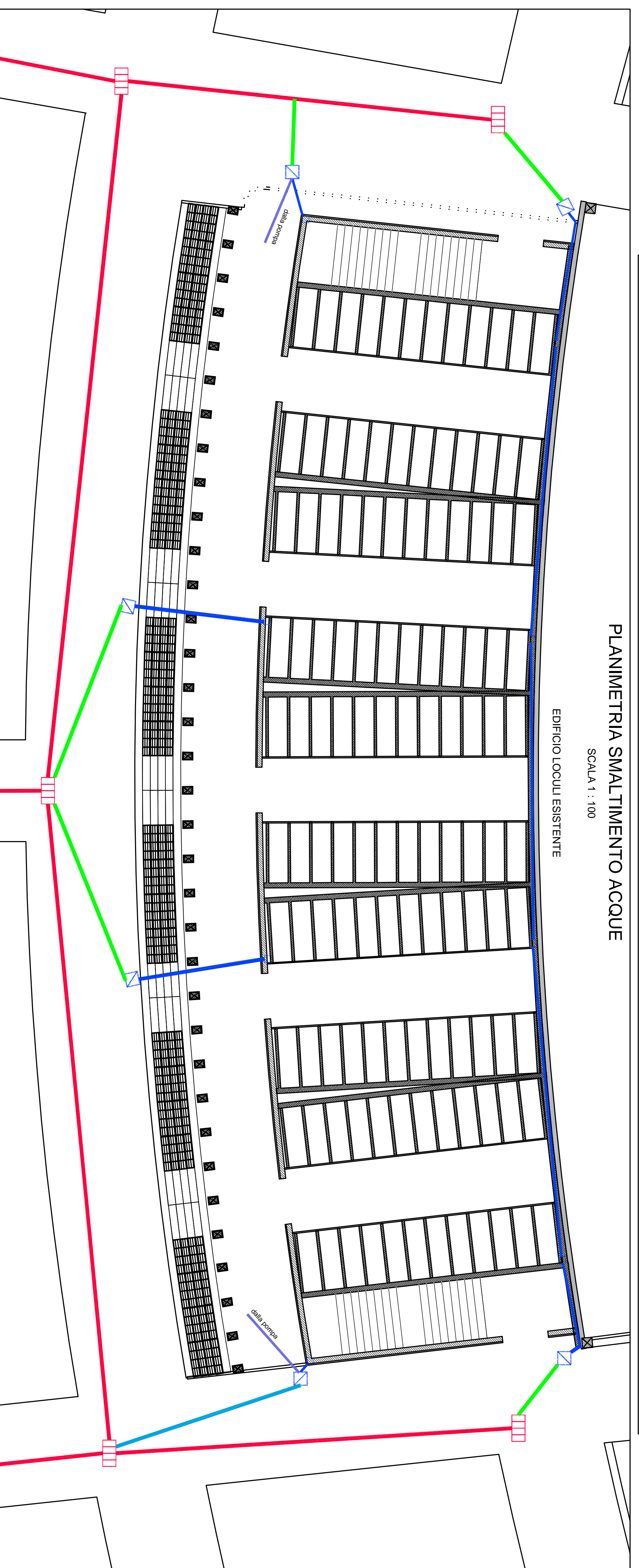
LEGENDA

-  RETE ACQUE PIOVANE
-  COLLEGAMENTO ALLA POMPA AL PIANO INTERRATO
-  RETE SMALTIMENTO ACQUE
-  POZZETTI DI ISPEZIONE CON CHIUSINO IN GHISA
-  RETE ESISTENTE SMALTIMENTO ACQUE METEORICHE
-  CADITOIA STRADALE ESISTENTE

PLANIMETRIA SMALTIMENTO ACQUE

SCALA 1 : 100

EDIFICIO LOCUI ESISTENTE



CITTA' DI DOMODOSSOLA

Provincia del Verbano-Cusio-Ossola

CIMITERO DEL CAPOLUOGO

REALIZZAZIONE DEL NUOVO  
EDIFICIO COLOMBARI E NUOVE CRIPTE

PROGETTO ESECUTIVO

PLANIMETRIA SMALTIMENTO  
ACQUE

file: ...	archivio: ...	tav. n°	data
		<b>5</b>	luglio 2005
		scala: 1/50 1/100	revisioni

I P R O G E T T I S T I

**BOSCHI-GRUGNI ASSOCIATI**  
Architettura e Ingegneria CIVILE  
Via Canale di Masera, 13 - 28045 DOMODOSSOLA (VB)  
Tel. fax: 0324/242343 - email: boschi-grugni@boscgr.it

reg. arch. PIETRO GRUGNI  
(responsabile)

**ARCHITETTI**  
**Luigi Bovio - Milena Gibrone**  
Piazza Carvur n°14, 28045 DOMODOSSOLA (VB)  
Tel. fax: 0324/242343 - Part. I.V.A. n° 01361600032

arch. LUIGI BOVIO  
arch. MILENA GIBRONE

**ARCHITETTO**  
**Piero Piana**  
Via Ceneriella n°17 - 28045 DOMODOSSOLA (VB)  
Part. I.V.A. n° 01360700030

arch. PIERO PIANA

I L C O M U N E